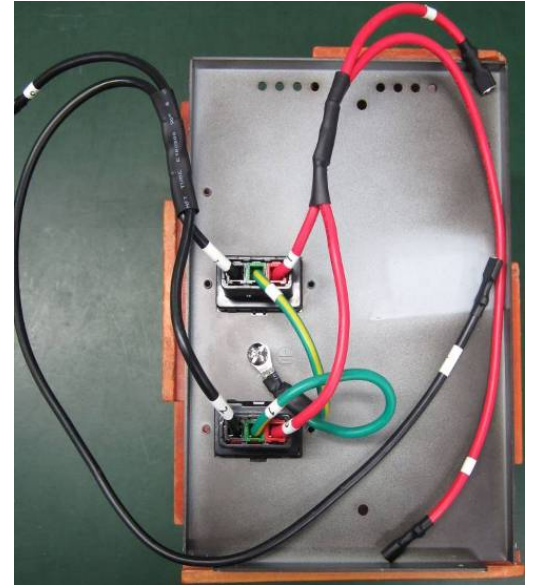


S.O.P. - How to assemble BP P96T-16x9Ah

Warning:

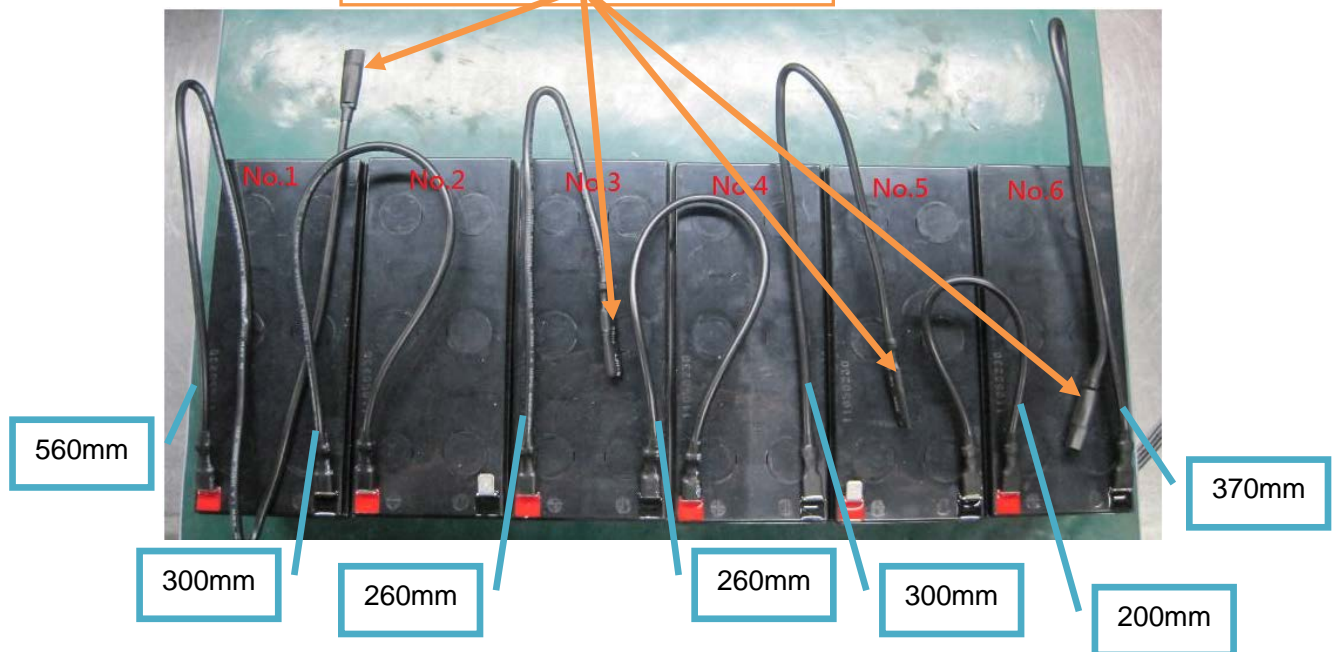
Be careful when connect batteries, do not make batteries have short circuit.

1. The receptacle's wires have been assembled, please do not dismantle them.



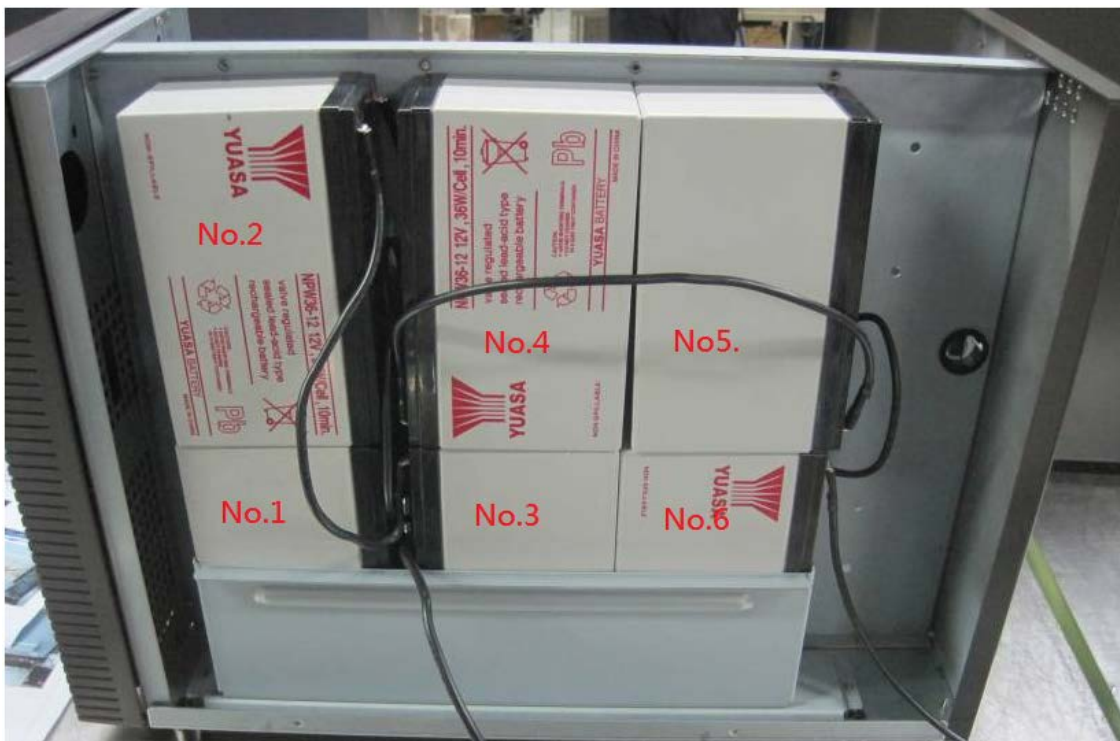
2. Please assemble the 6PCS batteries with black wire and place 6PCS batteries into the Battery Case as below.

The connectors should insulate with thermal tube.



Note:

- BAT No.1 (-) → BAT No2. (+)
- BAT No.3 (-) → BAT No4. (+)
- BAT No.5 (-) → BAT No6. (+)

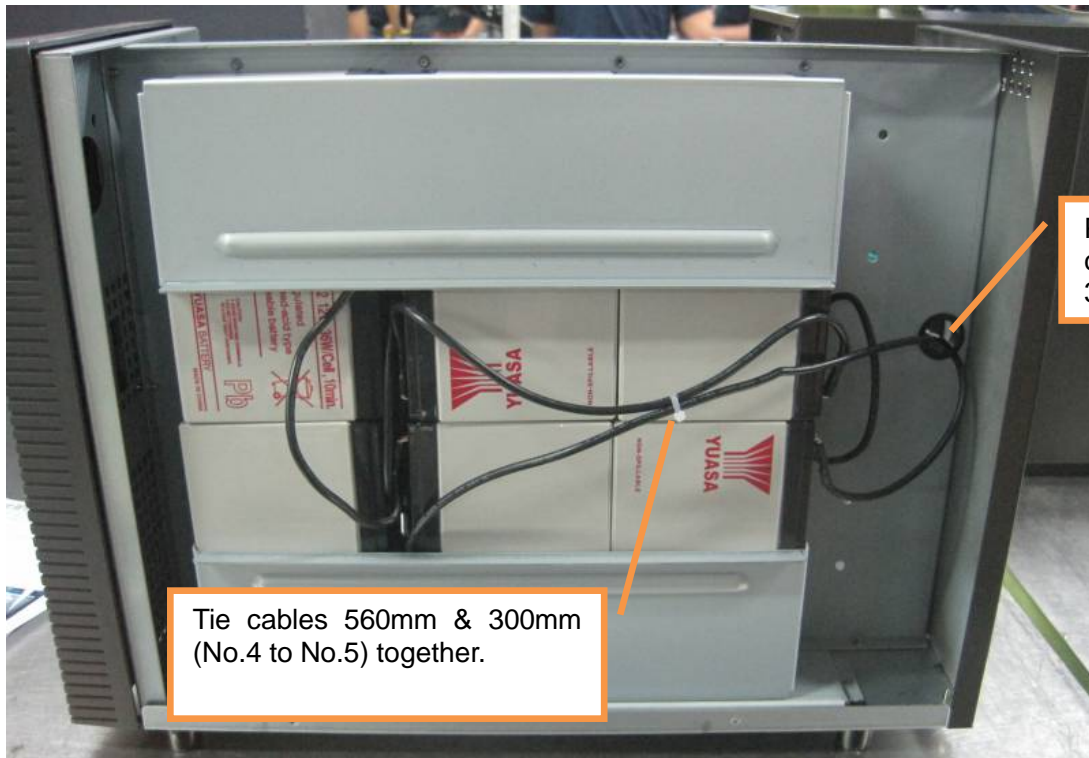


Note:

BAT No.2 (-) → BAT No.3. (+)

BAT No.4 (-) → BAT No5. (+)

3. Please fix them and do the opposite side.



4. Please assemble 10pcs batteries into the Battery Case's left side and assemble with fixing plates as below.





5. Please connect batteries on the left side with wires as below:

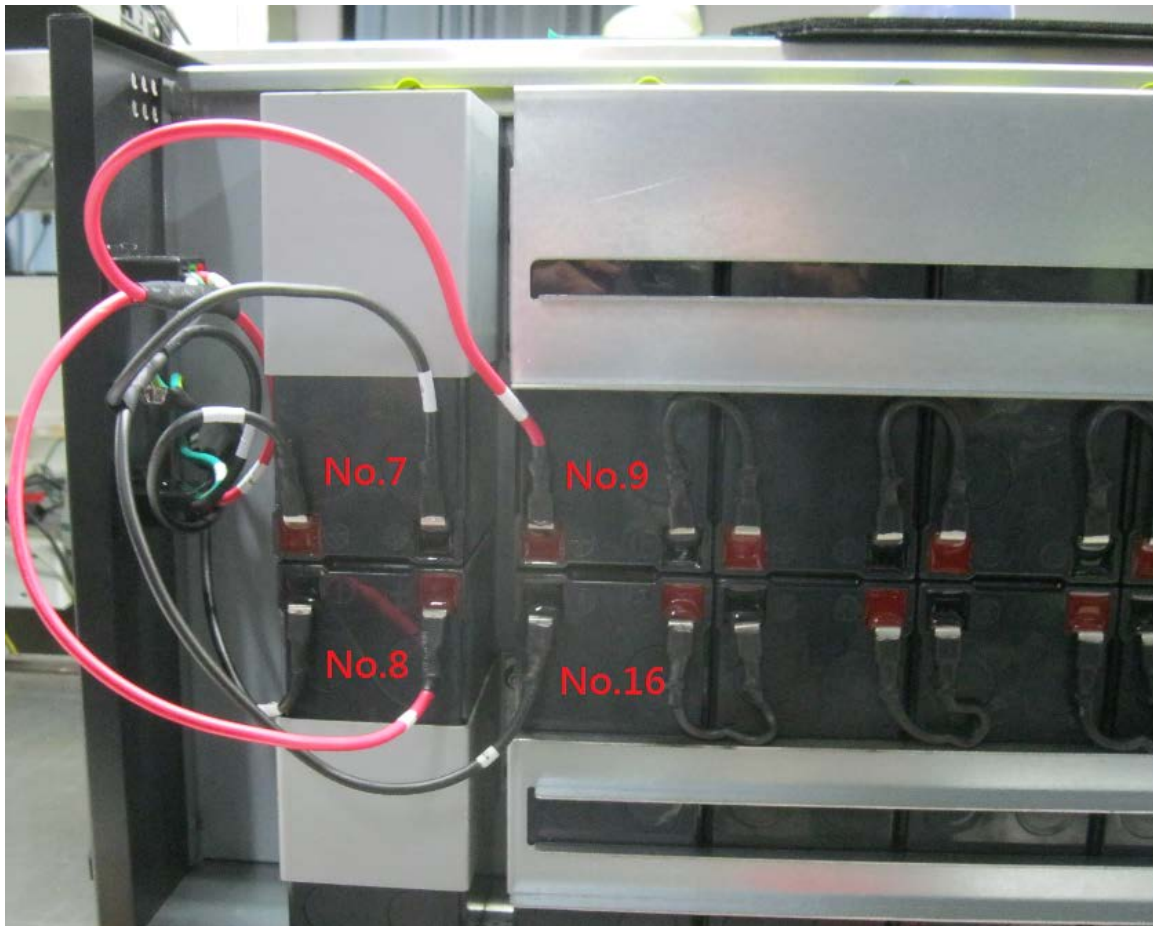


Note:

**BAT No.9 (-) → BAT No10. (+) ; BAT No.10 (-) → BAT No11. (+)
BAT No.11 (-) → BAT No12. (+) ; BAT No.12 (-) → BAT No13. (+) ;
BAT No.13 (-) → BAT No14. (+) ; BAT No.14 (-) → BAT No15. (+) ;**

BAT No.15 (-) → BAT No16. (+)

Ensure voltage over 80V between BAT No.9 (+) and BAT No.16 (-)



Note:

BAT No.6 (-) / cable 370mm → BAT No7. (+)

BAT No.1 (+) / cable 560mm → BAT No8. (-)

Ensure voltage over 80V between BAT No.7 (-) and BAT No.8 (+)

Bat receptacle's Shorter black wire 3# → BAT No. 7 (-)

Bat receptacle's Shorter red wire 4# → BAT No. 8 (+)

Bat receptacle's Longer black wire 3# → BAT No. 16 (-)

Bat receptacle's Longer red wire 4# → BAT No. 9 (+)



Note: Tie cables together

So you finish assembling batteries and you can fix the cover now.

